

CERTIFICATE OF LOCATION OF GOVERNMENT CORNER

NORTH QUARTER Corner of Section 25, Township 105, Range 42, 5TH P.M.

STATE OF MINNESOTA, County of MURRAY

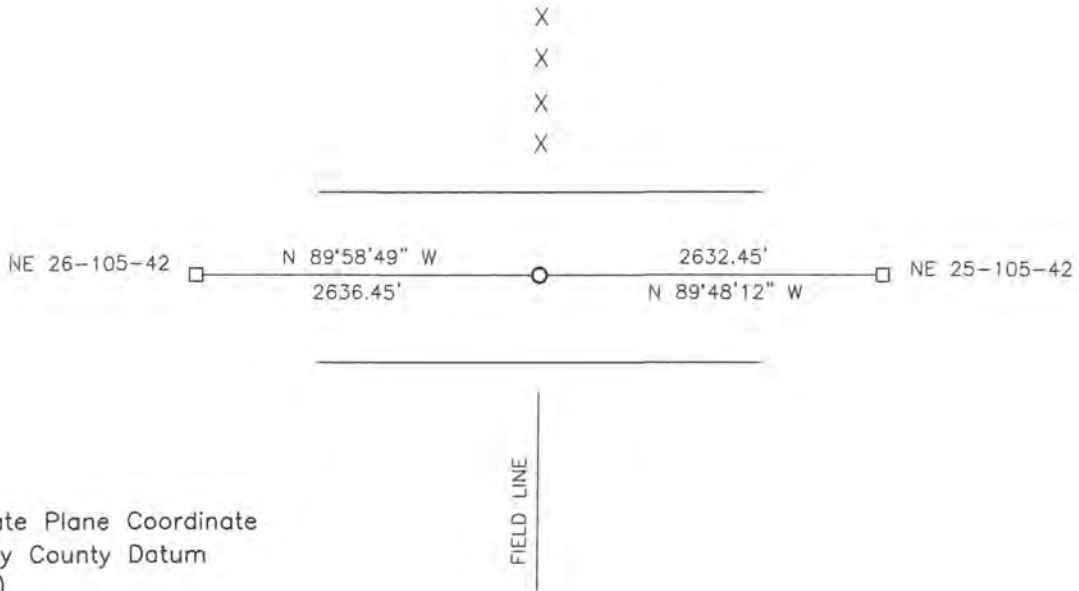
At the corner location shown on the sketch:

On 06-29-2017 found a CONCRETE BLOCK.
DATE

left monument as found, lowered monument, removed monument (explain)

On 07-17-2018 placed a SURVEY SPIKE WITH SEAL #43844.
DATE

SKETCH OF REFERENCE TIES



Minnesota State Plane Coordinate
 System Murray County Datum
 NAD83 (1996)

N: 110677.856
 E: 482336.127

Statement of evidence relative to this corner location is on back of page.

I hereby certify that this document and the data contained herein was prepared by me or under my direct supervision.

8/28/18
DATE

Daniel L. Bueltel
 License No. 43844

Statement of Evidence

In 1861, Wellman and Smoot did the original subdivision of the township.

On June 7, 1973, the Murray County Highway Department found a concrete monument at the corner. They set a steel pin over the top of the monument.

On September 5, 2012, the Murray County Highway Department found an 1/2" iron at the corner.

On June 19, 2017, Bueltel-Moseng Land Surveying found a iron on its side at the corner. We probed and found nothing. On June 29, 2017, we dug with a backhoe and found a concrete monument at the corner. We set a 5/8" iron with seal #43844 on the east side of the monument.

On July 17, 2018, Bueltel-Moseng Land Surveying set a survey spike with seal #43844 at the road surface after construction. It is in the center of the road, in line with the field line to the south and the fence line to the north.